



13 The Ride, Kingswood, Bristol, BS15 4SZ

£345,000

Offered for sale with the benefit of no onward chain is this super, well presented semi detached family home. In brief the accommodation comprises porch, hallway, lounge, open plan stylish kitchen diner. Upstairs are three generous bedrooms and modern bathroom. Outside is parking to the front and a large garage/workshop with electric door to the rear, with a low maintenance garden. Some of the many benefits include, gas central heating, upvc double glazing, external wall insulation. Council Tax Band C, Energy Rating C.

- Semi Detached Home
- Three Bedrooms
- Stylish Kitchen Diner
- Lounge
- Wood Burner
- Modern Bathroom
- Double Glazing
- Gas Central Heating
- Garage to Rear
- Off Street Parking

Viewing

Please contact our Brunt & Fussell Ltd Office on 01179566004 if you wish to arrange a viewing appointment for this property or require further information.



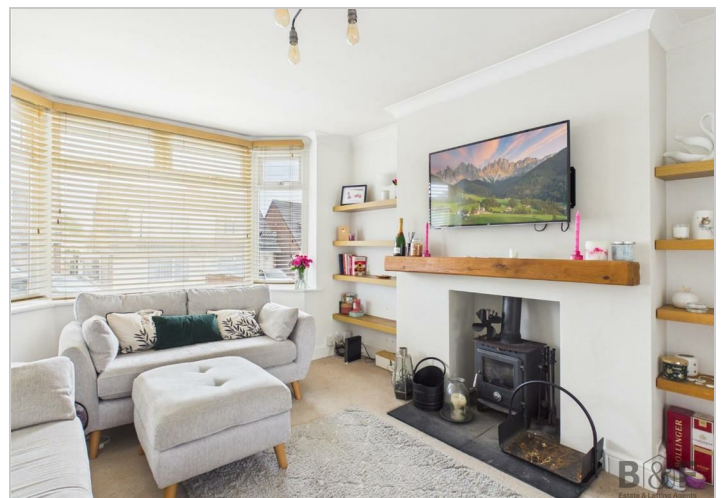
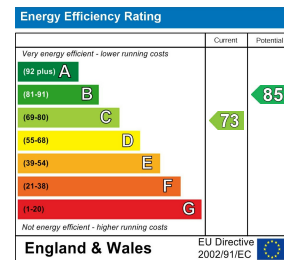
Floor Plan



Area Map



Energy Efficiency Graph



These particulars, whilst believed to be accurate are set out as a general outline only for guidance and do not constitute any part of an offer or contract. Intending purchasers should not rely on them as statements of representation of fact, but must satisfy themselves by inspection or otherwise as to their accuracy. No person in this firm's employment has the authority to make or give any representation or warranty in respect of the property.